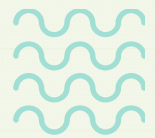


apa

portuguese
environment
agency



International Coordination in Flood Management: FRMP in Portugal.

Manuela Saramago

Head of Unit

Maria.saramago@apambiente.pt



**REPÚBLICA
PORTUGUESA**

ENVIRONMENT AND
CLIMATE ACTION

FRMP – Transboundary coordination

- APSFR in the transboundary river basins
- Surveillance Flood System the importance of coordination
- FRMP in Portugal and Spatial-Planning



FRMP – Transboundary coordination

The 'Infrastructure and Flood Security Working Group' is the expert group of the **Albufeira Convention** which is responsible for flood management of the Spanish/Portuguese river basins. This working group has the following attributions:

- (i) identify relevant information in flood and emergency situations and ensure mechanisms for information exchange;
- (ii) promote the development of joint studies on floods and management of water infrastructures with transboundary effects;
- (iii) ensure the elaboration and installation of flood and emergency management instruments in the shared river basins (...)



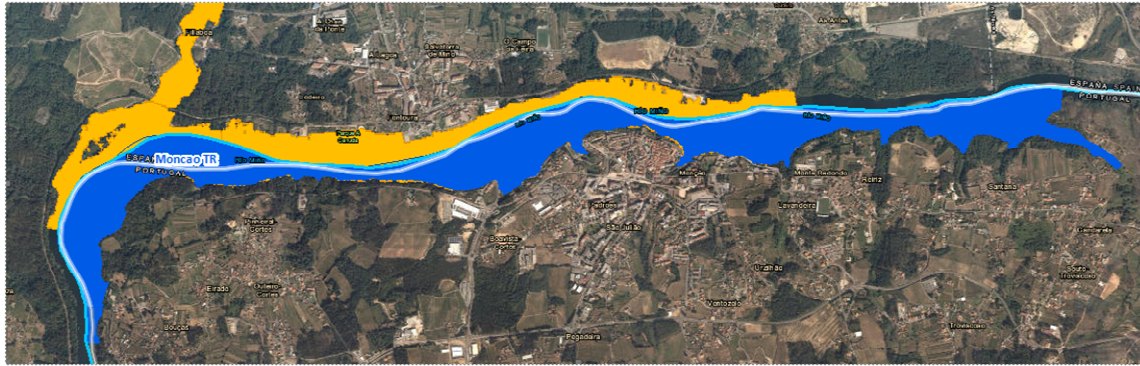
Working group Meeting at Porto



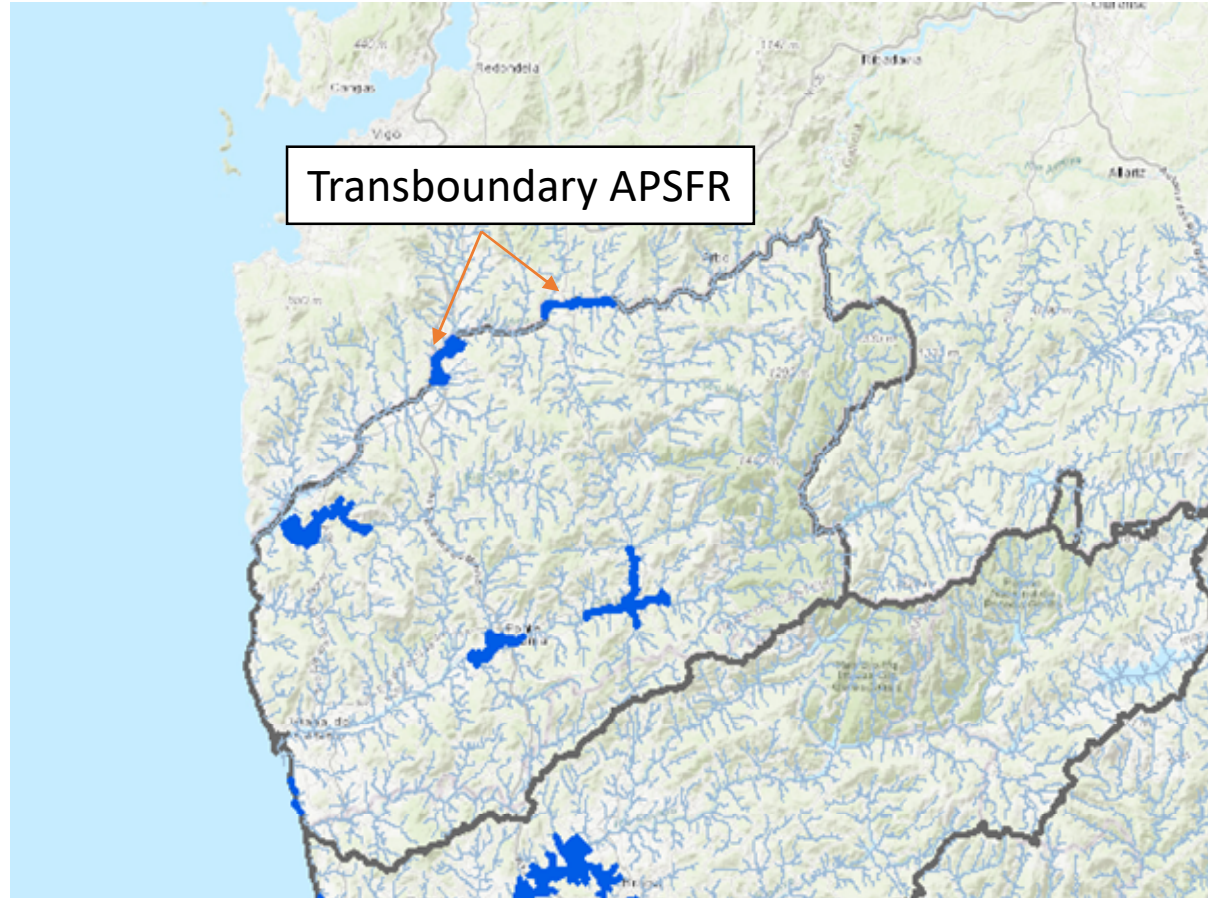
FRMP - Exchange Information and Data

River basin	APSFR PT	APSFR ES	Shared Information and data
Minho	Monção Valença	O Porriño Ponteareas	Correspondence with the APSEER coding between the two countries
			Daily flow series, discharges from reservoirs and from hydrometric sites
Douro	Chaves	Támega-Bubal	Flood hydrographs
			Operating rules discharges from reservoirs
			Maps of flood extent
Guadiana	Vila Real de Santo António	Guadiana X	Digital Terrain Model
			Roughness coefficients
			Peak flows considered in hydraulic modelling T10, T20, T100, T500 e T1000.
			Existing obstacles

Transboundary APSFR Minho River Basin

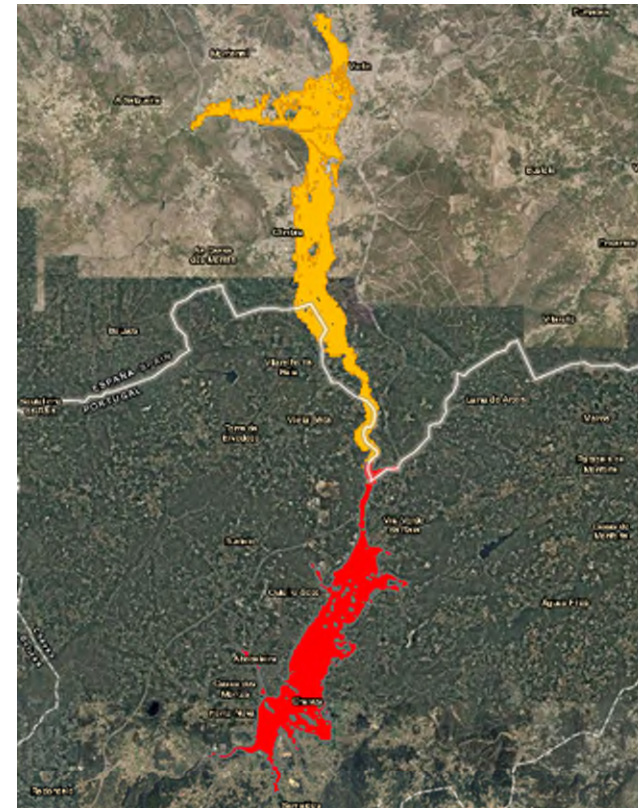
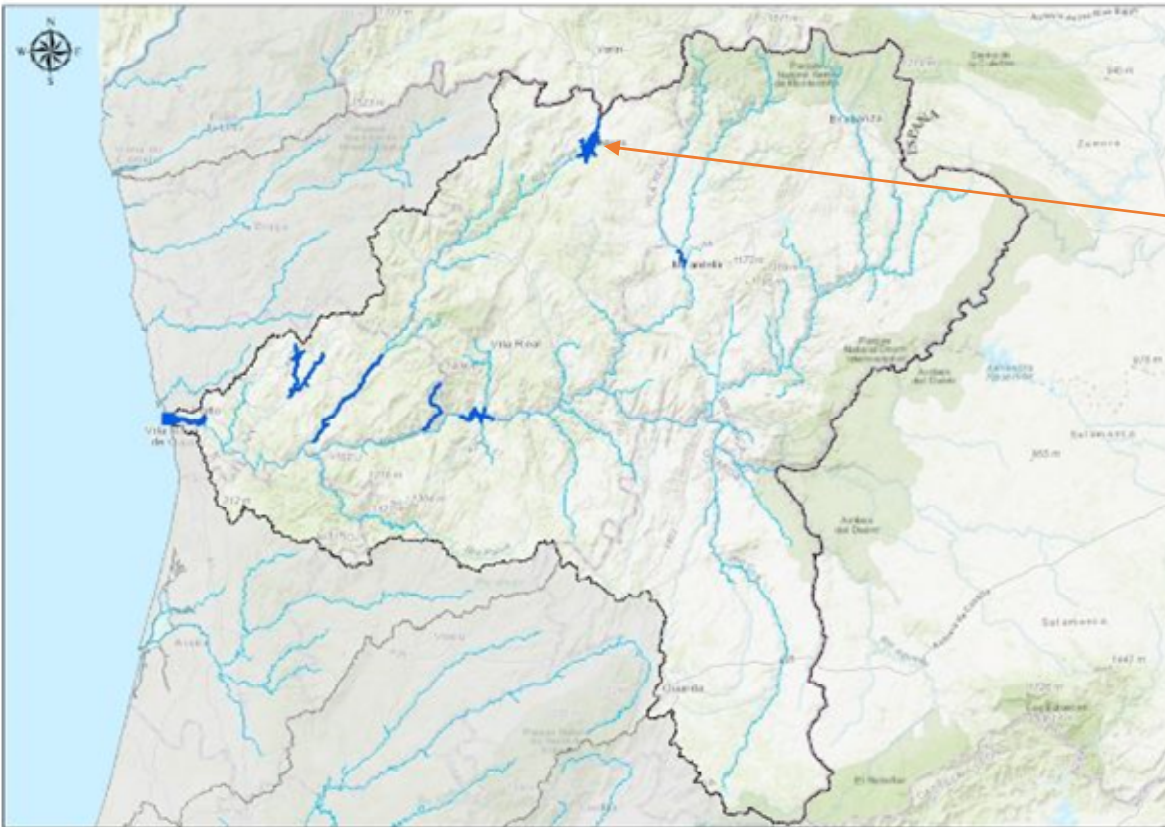


Minho transboundary APSFR – flood management depends from the discharges of upstream dams, so the real-time information exchange is essential.



Transboundary APSFR – Douro River

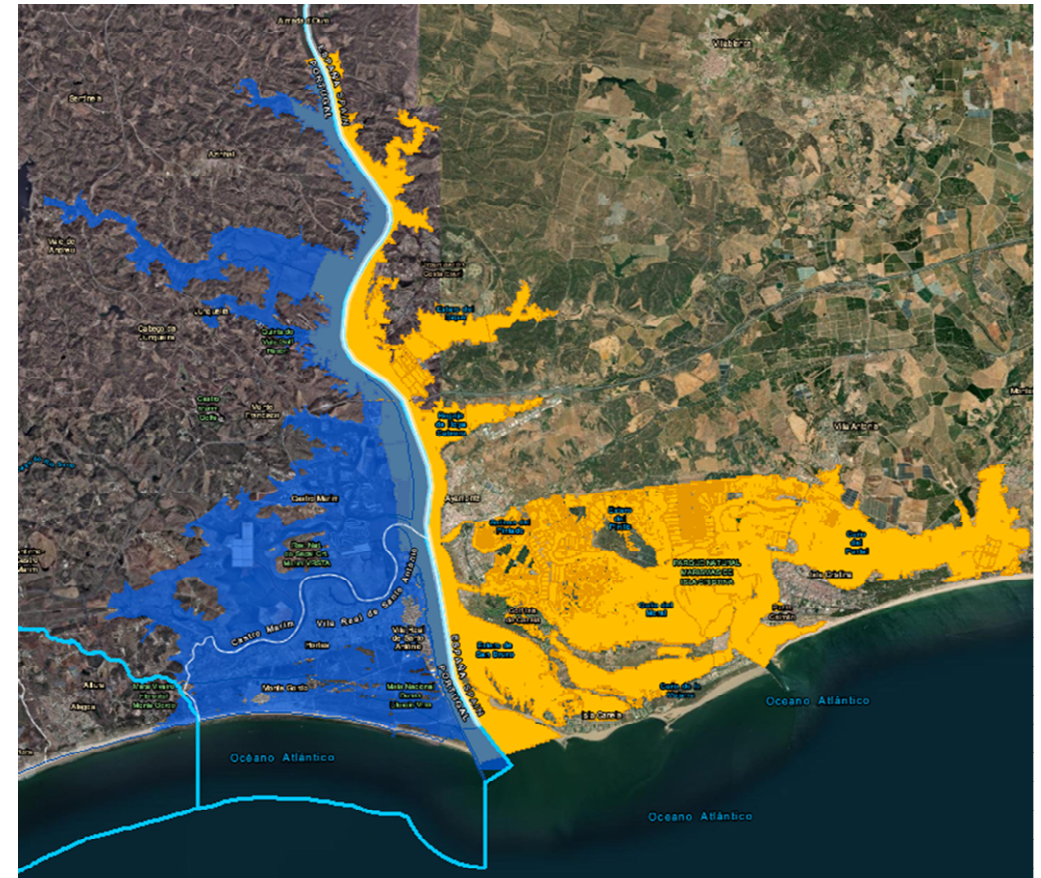
One transboundary APSFR, but
Two other depending from upstream
management and flood conditions, so
the real-time information exchange is
essential



Transboundary APSFR – Guadiana River



Vila Real de Santo António – PT / Guadiana XI

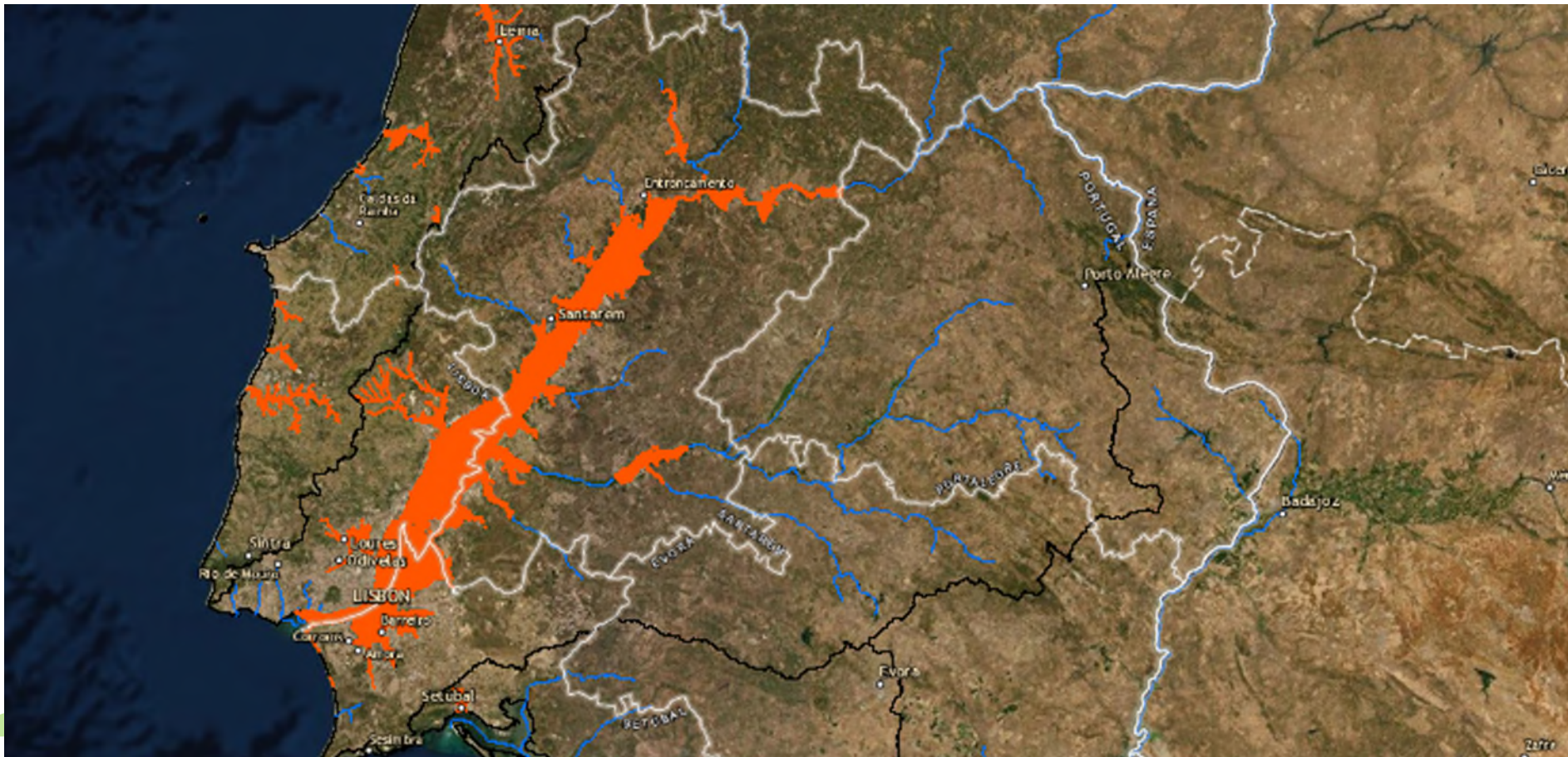




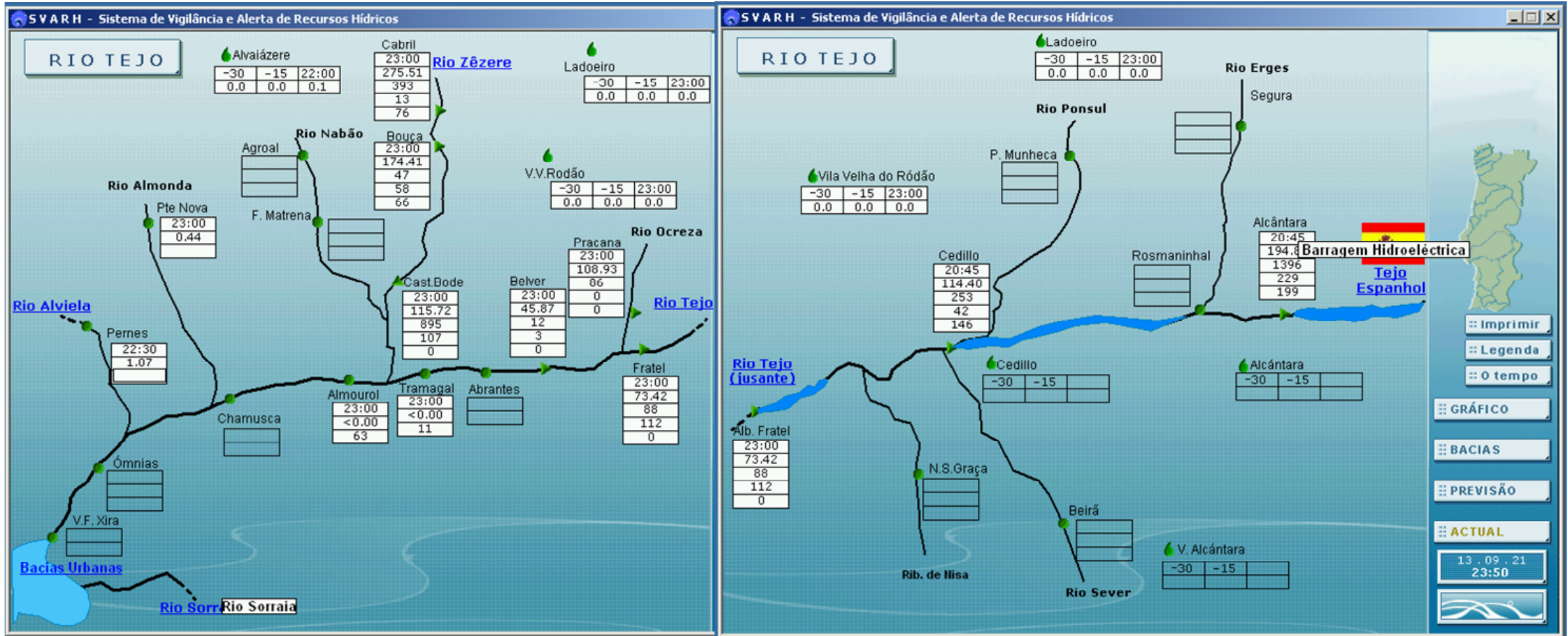
**Flood management events in
transboundary river basis**

Flood Surveillance System in Transboundary River Basins

Albufeira Convention sets that both countries commit to sharing in real time, during an emergency flooding situation - precipitation, flows, levels, reservoir situations and operating conditions. The aim of this is to support the adoption of the most appropriate management strategies and the coordination of such strategies. Also, both countries must coordinate their individual and joint actions so as to prevent, eliminate, mitigate and control the effects of flooding



Flood Surveillance System in Transboundary River Basins

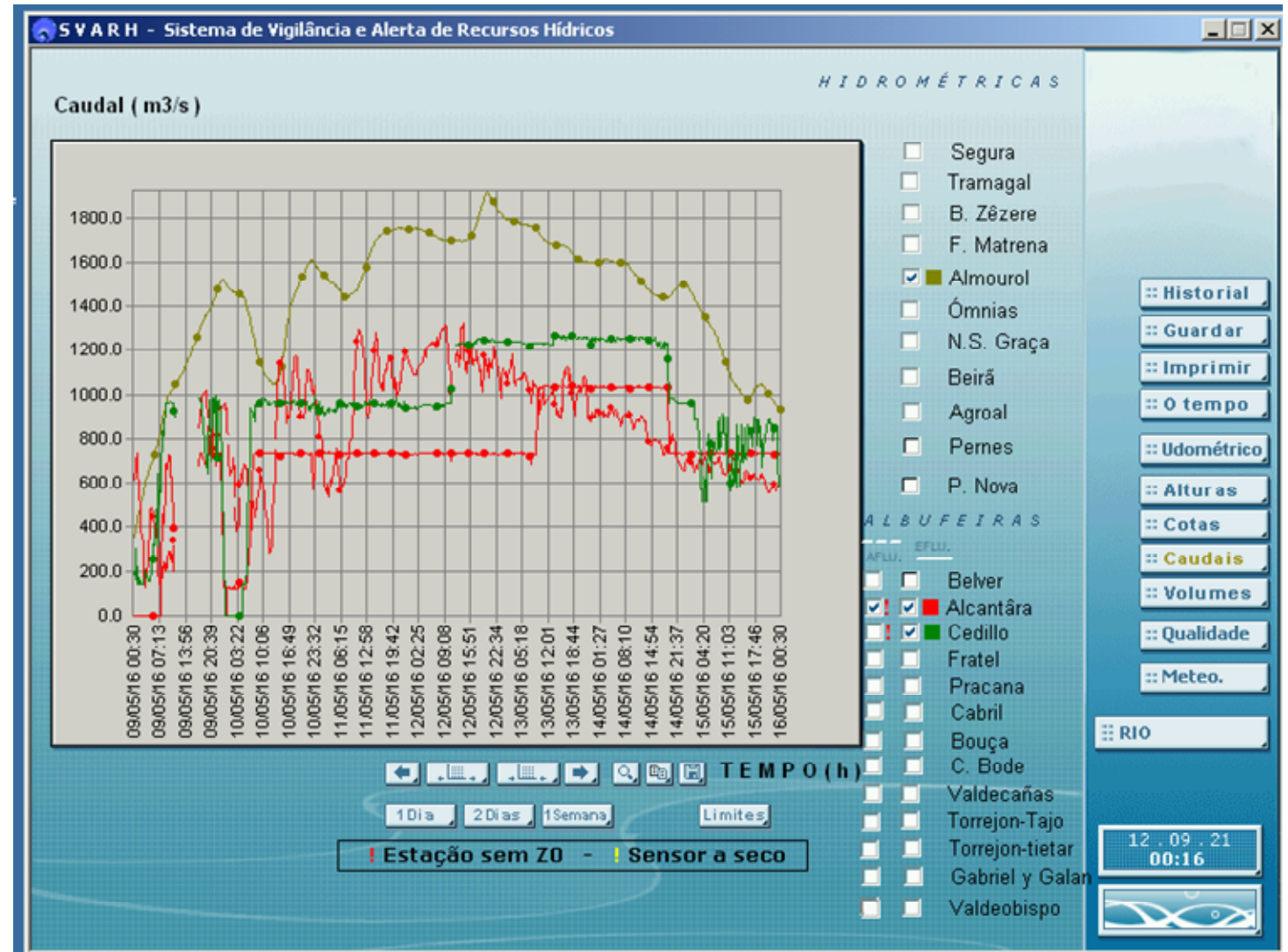


Flood Surveillance System in Transboundary River Basins

- Exchange of data in real-time to help the emergency response
- Cooperation enables to minimize the flood impact ex. management of discharges to delay peak flows
- Sharing flood warnings to anticipate actions

FRMP an opportunity to:

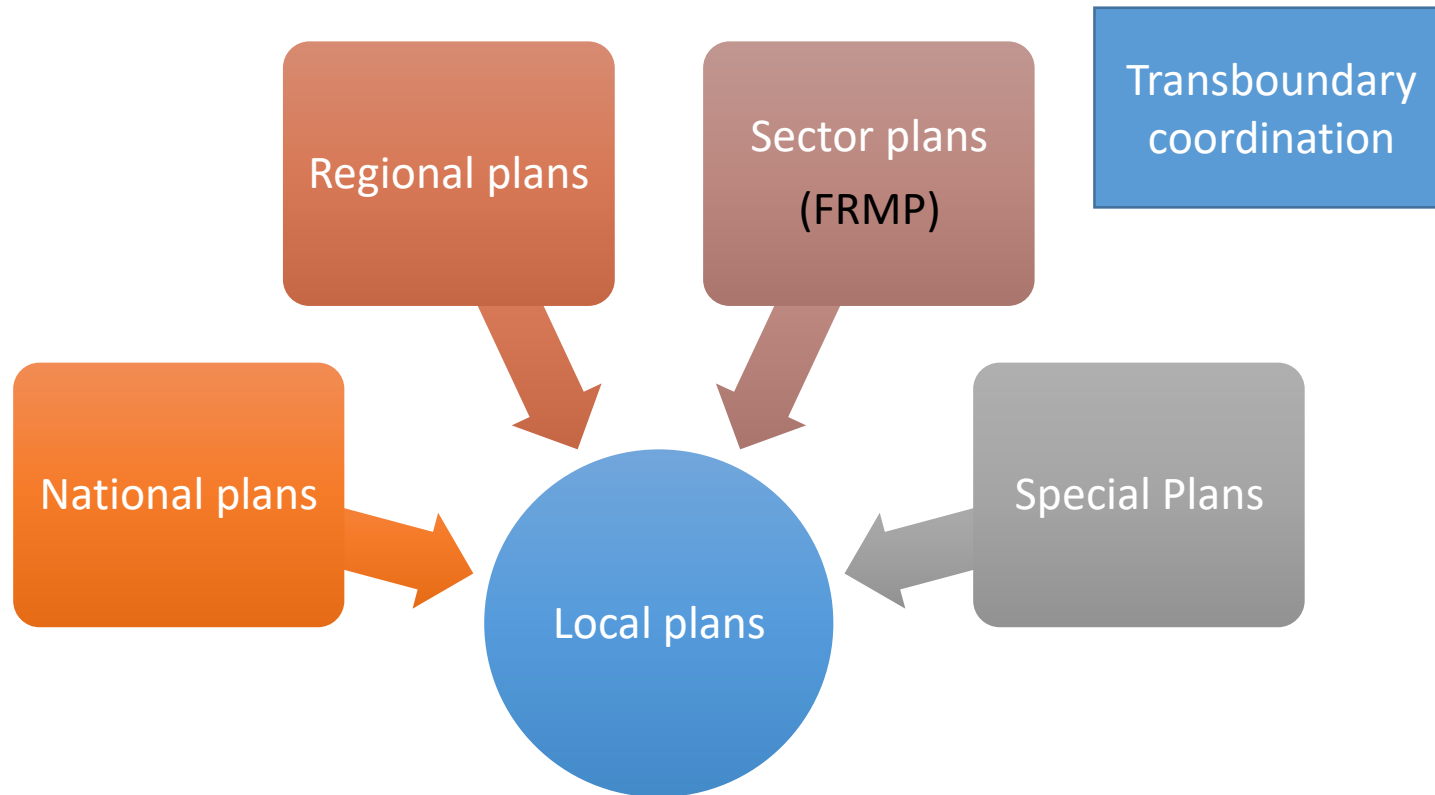
- Ensure the real-time data exchange for all transboundary river basins





Flood Risk Management Plans And Spatial Planning

FRMP and Spatial Planning



Challenges of spatial planning and flood management:

- Local-level spatial planning has to integrate multiple spatial scales plans, from national, regional and strategic;
- Balance between economic and social development and flood risk management
- How to communicate and involve stakeholders, public, decision-makers in the

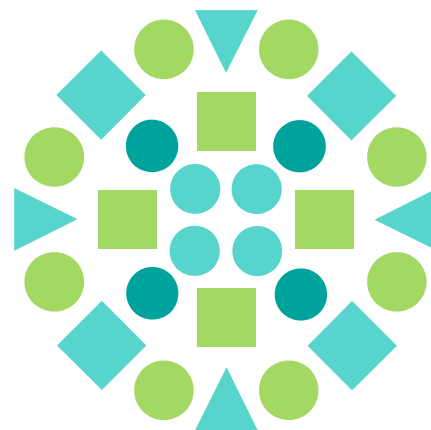
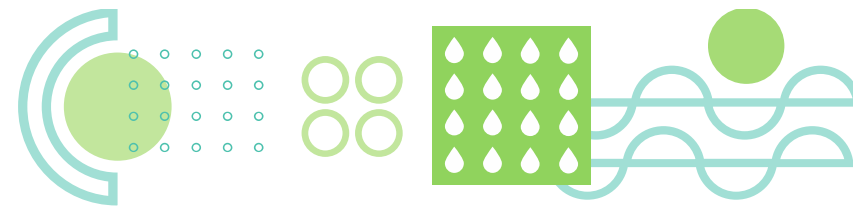
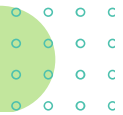


Lessons learn from 1st Cycle:

- Involve local authorities and stakeholders on FD implementation process;
- Promote the use of the hydrodynamic parameters - water velocity and depth - as a tool to help spatial-planning
- Communication on how FRMP plans integrate the regulation spatial-planning system
- Guide with rules for spatial-planning on APSFR

Building resilient cities to extreme events





THANK YOU

apambiente.pt

apa
portuguese
environment
agency

