

# SAFERPLACES

Improved assessment of pluvial, fluvial and coastal flood hazards and risks in European cities as a mean to build safer and resilient communities

*Luis Mediero*

*[luis.mediero@upm.es](mailto:luis.mediero@upm.es)*



POLITÉCNICA

Estado de implantación de los planes de gestión del riesgo de inundación

Madrid, 14 de noviembre de 2019



Climate-KIC is supported by the EIT, a body of the European Union



# El proyecto

## Proyecto de innovación

### Fase de demostración



#### Research Centers



#### Universities



#### SME's



#### Climate-Kic Flagship Initiative



# Panel de entidades interesadas y usuarios finales

## Insurances and emergency



## Public bodies



## SME's



## Water utilities



## Universities and research centres



# La innovación



## THE INNOVATION

### INNOVATIVE FLOOD RISK MAPPING TOOLS

SAFERPLACES employs innovative climate, hydrological and hydraulic, topographic and economic modelling techniques to assess pluvial, fluvial and coastal flood hazard and risk in urban environments under current and future climates.

From Numerical to DEM-based simple models  
*Simplicity is the ultimate sophistication*

Assessment of flood damages

Supported by science

Cost-effective and fast

Fluvial, pluvial and coastal floods

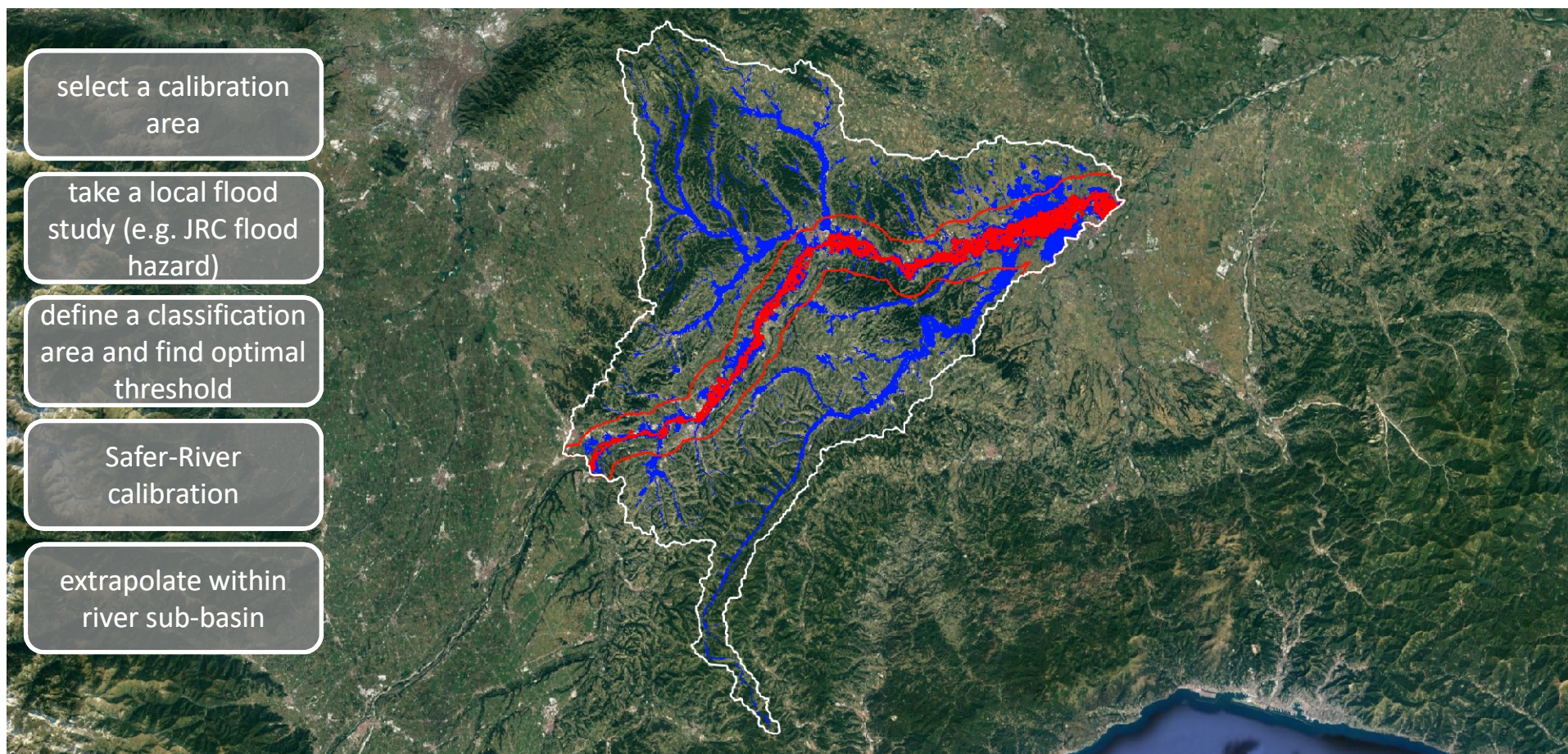
Web-based: launch anywhere



# Casos piloto

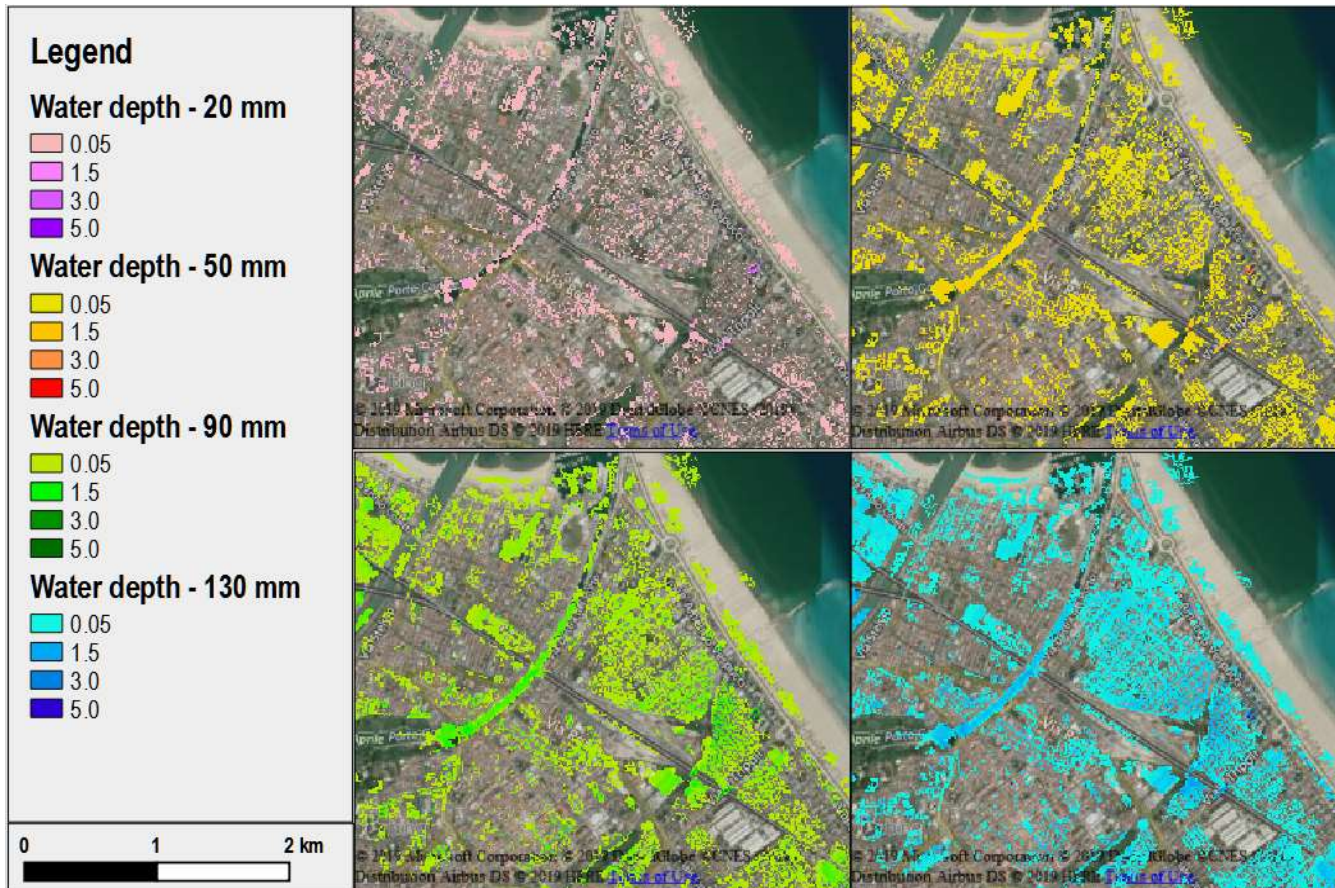


# SAFER-RIVER





# SAFER-RAIN



Running Times - 1 single processor

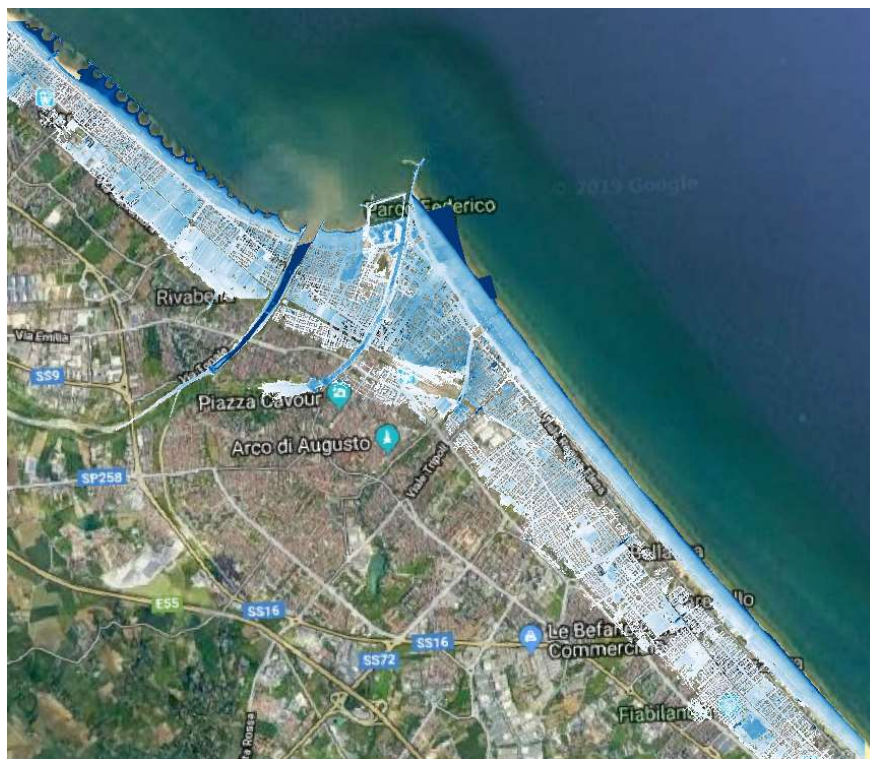
900 sec – pre-processing LIDAR

300 sec – Rainfall Scenario LIDAR

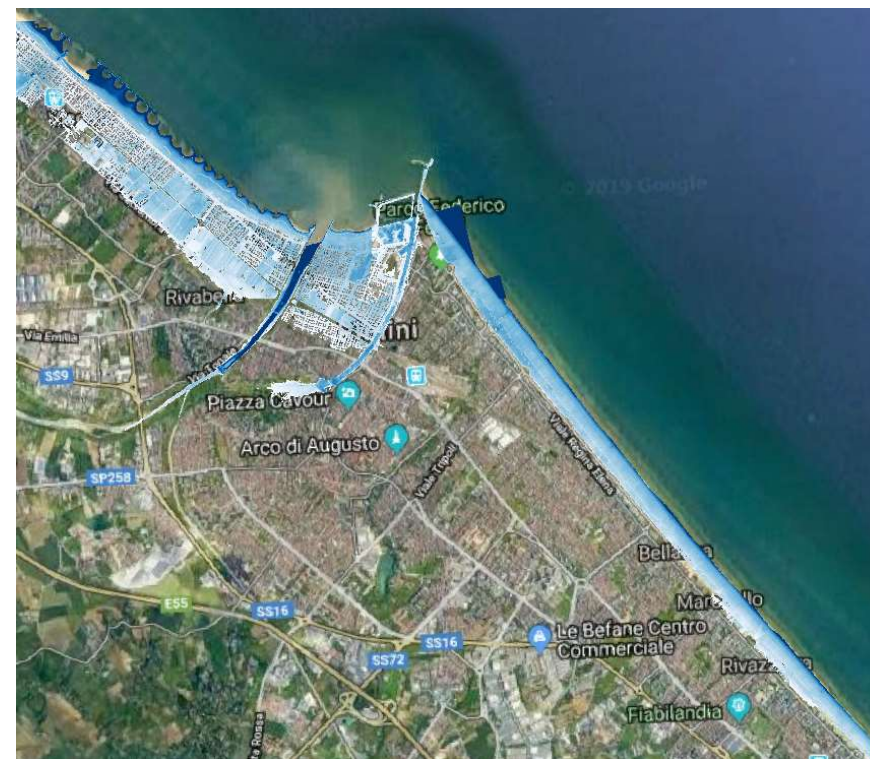
# SAFER-COAST

## Ciudad de Rímini (Italia)

Situación actual

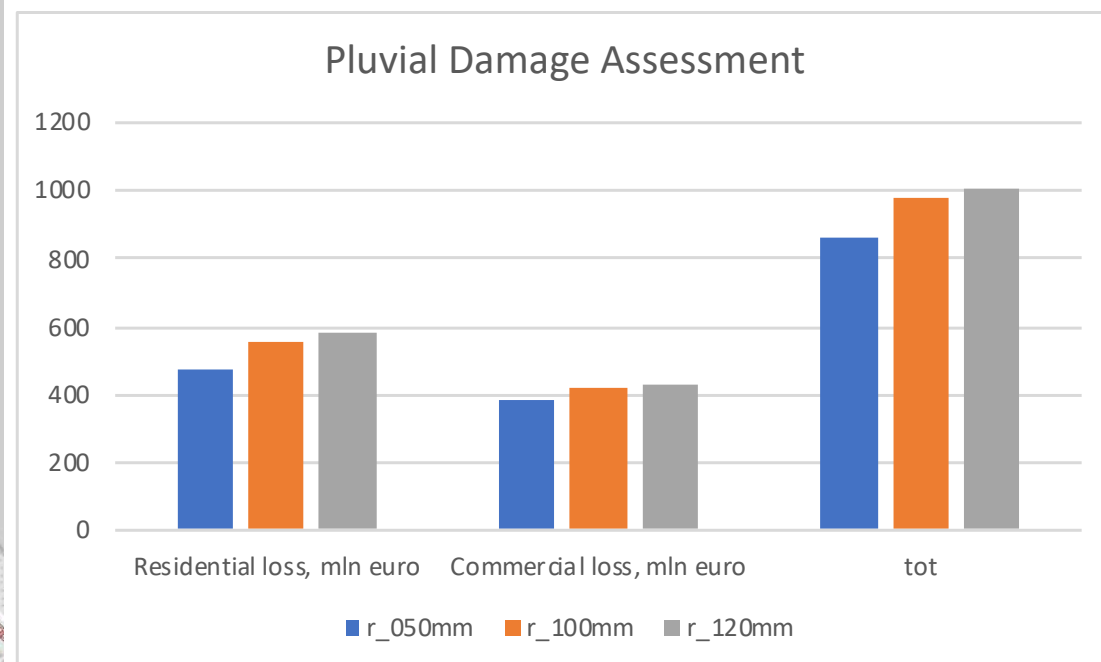
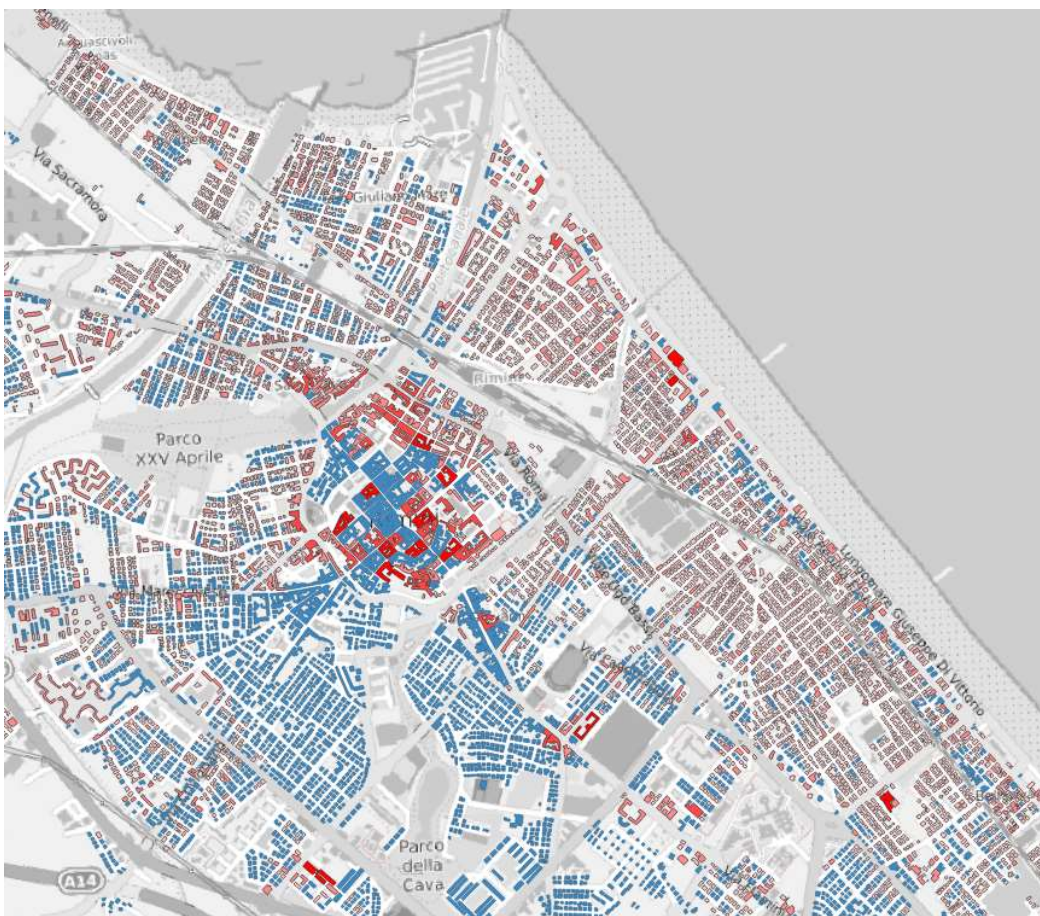


Actuación 'Parco del Mare'





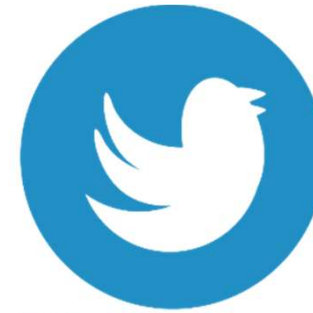
# SAFER-DAMAGE



# Diseminación



**saferplaces.co**



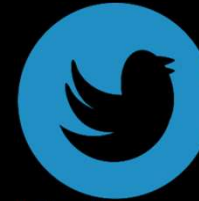
**@SaferPlacesCKIC**  
**#saferplaces\_ckic**

<https://youtu.be/drAMcHrtKac>



# Thank You and Follow Us:

Saferplaces.co



@SaferPlacesCKIC  
#saferplaces\_ckic

*Luis Mediero*  
*luis.mediero@upm.es*



POLITÉCNICA

