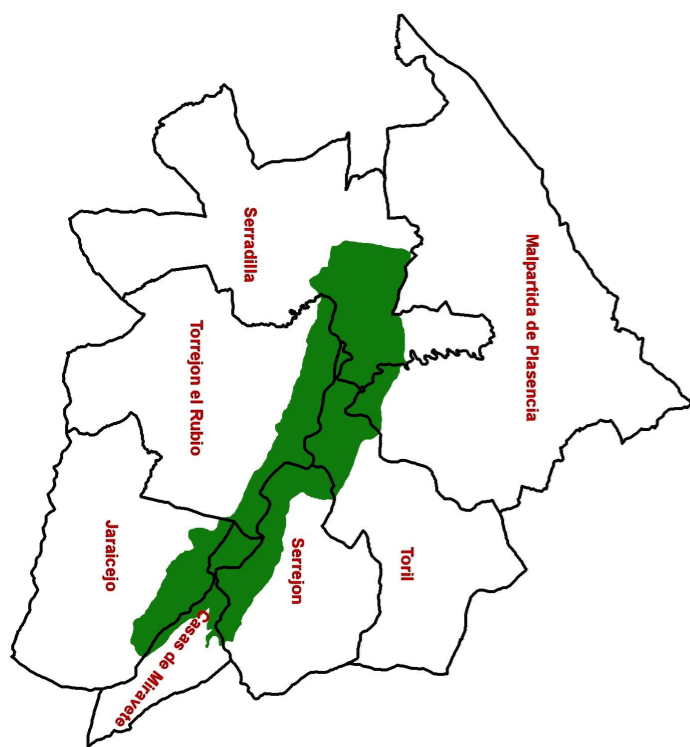


Other walks in the area of Monfragüe



MONFRAGÜE
PARQUE NACIONAL



Realización y texto: José M^a Jiménez Barco y
María Pilar Martín Vivas
Traducción: Marta Martín Vivas
Junio 2012

Blue route: forest road Serradilla

Distance one way: 21km Time: 6 h

Realization: on foot, by bicycle or on horseback

Difficulty: medium

Description: The route begins at the road that goes to Monfragüe train station from the Ex-208, opposite the camping site. Although it can be started at Villarreal de San Carlos or Malpartida de Plasencia, following the traditional shepherds road. It crosses a wide area of pastures with big farms on a very flat land until the foothills of the mountain Sierra de la Herrera. From here the route enters the municipality of Serradilla, crossing its public mountain, an extremely dense pine forest that houses representatives species of the Mediterranean scrubland: carquesa, strawberry tree, olivilla... After a few ascents and descents the village of Serradilla is in sight. Pause at the highest areas of the route to watch the birds and enjoy the scenery.



Grey route: Jaraicejo - Garganta del Cubo

Distance one way: 8km Time: 3 h

Realization: on foot, by bicycle Difficulty: medium

Description: From the village of Jaraicejo the path climbs up to "Mesa de Cantagallo". In the descent towards the stream Arroyo de la Vid the path joins Canada Real of the mountain pass Puerto de Miravete. Once you pass by the stream reservoir follow the Canada to find a path that veers off to the left. It is a gentle ascent in the sunny side covered in jaguarzo and rosemary to the hill "Collado de los Castaños". The descent starts here throughout a shady area with dense heather tickets and a few junipers and cork oaks until you reach the gorge Garganta del Cubo, border to the National Park and end of the route. Follow the same path to return to the village of Jaraicejo. Don't forget to look at the sky while you are walking, Black Vultures and Short-toed Eagles will be around.

Orange route: Camino Viejo del Pico Miravete

Distance one way: 4 km Time: 1:30 h

Realization: on foot Difficulty: medium-high

Description: At the highest part of the urban area of Casas de Miravete, near the municipal swimming pool, begins the path that will take you to the highest point surrounding the Park. The first stretch of the path overlaps the Cañada Real Leonesa Occidental. The path branches off immediately after crossing over the former N-V to take a narrow lane throughout a reforestation Eucalyptus trees forest where heathers, gum rockrose and broom fight to survive against the prevalence of the foreign tree. The path ascends gently until the summit at 666 m. There is a resting area where the N-V, the Canada and the path join in. The end is in sight, the slope is quite important and the views from the summit are breathtaking. To the north the mountain Sierra de Gredos and Campo de Arañuelo to the east, the ridges of Villuercas; to the south the raña and Deleitosa and the plains of Trujillo; and, to the west, the national Park and its surrounding pastures.

The descent via the same route will be easy.



Purple route: Cañada Real to Torrejón el Rubio

Distance one way 13km

Time: 4 h

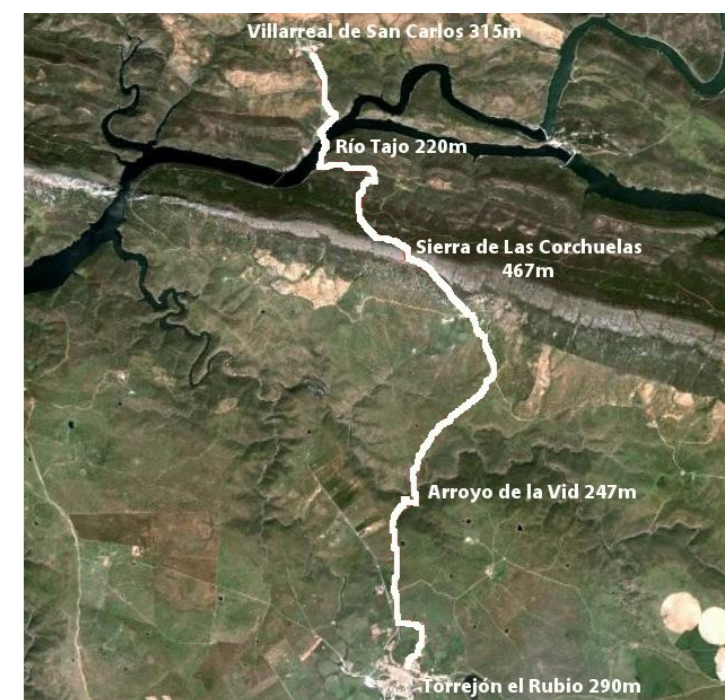
Realization: on foot or on horseback

Difficulty: medium-high

Description: From Villarreal the first stretch of the route overlaps the red route that begins by the thatched hut at the bottom end of the village. The path runs along a sunny area of scrublands with remains of an old paved road. Near the bridge Puente del Cardenal there is a resting area with huts and a fountain. After crossing the bridge over the river Tagus the road veers off to the left of the red route. The ascent to the mountain Sierra de las Corchuelas begins on the shady side, an area of scrubland and cork oaks. Taking advantage of the height enjoy the views; to the south the pastures that surround the Park and, to the north, the river Tagus. We descent via an stony strip passing by the old palace of Las Corchuelas before reaching the stream Arroyo de la Vid. This is a good place to take a rest before approaching the last ascent where you will see some stretches of the old paved road. Near the village Torrejón el Rubio the path gets close to the EX-208, although it turns towards the left to reach the village at the top end of it.

When the bridge Puente del Cardenal is covered by water the route can be started at Fuente del Francés. Take the red route towards the bridge and veer to the right to take the old paved road.

An **authorization** is needed for that route and can be obtained at the Park Information Centre in Villarreal de San Carlos, at the Tourism Information Office in Torrejón el Rubio or in the portal of the Online Booking Office of the National Parks' Regional Organism .



**Brown route:
Serradilla - Villarreal de San Carlos**

Distance one way: **13km**

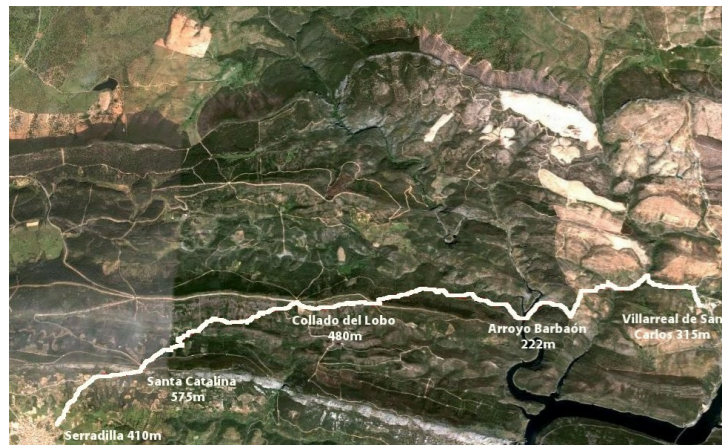
Time: **4:30 h**

Realization: **on foot**

Difficulty: **medium**

Description: The walk starts at the square Plaza de la Constitución, walk towards Fuente Nueva, passing by Santuario del Cristo. The footpath that begins behind the fountain leads upwards to reach the mountain Sierra de Santa Catalina through orchards and olive groves first and later through a shady forest that becomes more dense near the summit. The descent follows the shady side where you can see chestnut trees. The path veers to the right, cross the brook Arroyo de la Garganta and follow the sunny side of the mountain, Sierra del Medio. This is an area where you can easily find red deers and wild boars. The path changes on entering the Park into a track that takes you to the hill, Collado del Lobo. Don't miss the views of pine trees in Monte Publico de Serradilla, the mountain Sierra del Mingazo and the brook Arroyo Barbaoncillo. Follow the track on the sunny side of the mountain until you find a spot that will allow you to continue on the shady side. When you arrive to a small plain take the path towards the left, cross over the stream, Arroyo Barbaon via the bridge Puente del Horquillo. The route continues uphill through an area of juniper trees until the hill where the path joins the green route. Follow it to reach Villarreal.

This route on the opposite direction is slightly more difficult. An **authorization** is needed and can be obtained at the Park Information Centre in Villarreal the San Carlos or in the portal of the Online Booking Office of the National Parks' Regional Organisation .



**Magenta route:
Toril - La Herguijuela - Serrejón**

Distance: **33km**

Time: **9 h**

Realization: **on foot, by bicycle or on horseback**

Difficulty: **medium-low**

Description: the village of Toril is the starting and finishing point. From the *Centre Interpretation of the Biosphere Reserva of Monfragüe* take the road that goes west, crossing over the train tracks and the stream Arroyo Porquerizo, to go deep into a helm oak forest on pastures. A few kilometres later you walk by the Macarra farmhouse and cross over the road that goes to Serrejón. The path continues towards the vicinity of a farmhouse, a damp area due to its closeness to the river Tietar with extraordinary examples of cork trees. At this point the path turns left towards Serrejón, crossing the surroundings of the stream Arroyo Valbuena. This stretch of the route approaches the Park, the landscape is less of pastures and the vegetation is more varied. There is the chance to see some of the great mammals of Monfragüe. Once you reach the village of Serrejon enjoy the traditional architecture, the village is well worth exploring. To continue follow the road in the direction of Casatejada, to eventually pick up a path to go deep into the pastures. Enjoy the panoramic views of the mountain Sierra de Gredos.

This route started at the village of Toril but the village of Serrejón or the farmhouse of La Herguijuela at the Bazagona road could be starting points too.

Be aware that the route goes through farms you go through gates so make sure you close them properly. You can find cattle around.



**Blue route:
Via Pecuaria to Malpartida de Plasencia**

Distance one way: **20km**

Time: **6 h**

Realization: **on foot, by bicycle or on horseback**

Difficulty: **medium**

Description:

The Cañada Real Vizana or Trujillana crosses the National Park, and from Villarreal de San Carlos, the resting place of cattle, goes north (Malpartida de Plasencia) and south (Torrejón el Rubio).

Leave Villarreal de San Carlos heading north, cross over the Ex-208 and continue on the left following the signpost Canada. After a gentle ascent and descent cross over the road again and continue on the right. From here the path climbs up through a reforestation area to reach La Serrana, a summit with fine views. Descend, leaving behind the National Park, following the road on the shady side. The farmhouse of Venta Quemada is on your right. You will cross a large area of pasture before reaching the road. Cross it and continue parallel to it, the Cañada Real overlaps the road.

Cross over the road once more, continue under the train tracks and turn right immediately afterwards. The cattle track runs parallel to a minor road that you have to cross a couple of times. After crossing the stream Arroyo Tamujoso follow underneath the dual carriageway EX-A1 and, finally, cross the Ex-108 to reach the village of Malpartida de Plasencia.



Teléfonos de interés

- Centro de Información y Visitantes del Parque Nacional de Monfragüe 927 19 91 34
- Oficina de Turismo de Torrejón el Rubio 927 45 52 92



www.extremambiente.es
<http://reddeparquesnacionales.mma.es/parques/monfrague>
<http://www.reservasparquesnacionales.es/real/ParquesNac/index.aspx>
<http://www.porticodemonfrague.es/>

informacion.monfrague@juntaextremadura.net